



## WAI'OLU SUITE

*1, 2 or 3 Bedrooms*

An excellent choice for couples or a small group traveling together, the lower-level Wai'olu Suite feels tranquil and secluded, yet is a short stroll from the adults-only Palm Grove pool. Warm and welcoming, the large living area flows seamlessly outdoors for dining and lounging, enhanced by spectacular views of the Pacific across the gardens. Also opening to the lanai, the primary bedroom features a walk-in closet and a deluxe Four Seasons bathroom with an outdoor lava-rock shower. An optional connecting second bedroom

offers a king-sized bed and optional pullout sofa bed. Wai'olu means "cool, tranquil waters" in Hawaiian, and it is also the name of the nearby pond, fed by freshwater springs that originate in the high elevations of Hualālai mountain.

### *Location*

Suite 2901 in Palm Grove Crescent – a tranquil, secluded setting, featuring our adult-only pool.

### *Complimentary Services & Amenities*

- Suite Experience Manager for trip planning and personal assistance
- USD 250 daily food and beverage credit
- Breakfast daily at 'ULU Ocean Grill or via In-Room Dining
- Daily non-motorized ocean activities with Alaka'i Nalu
- One-hour customizable session in Hualālai Golf Hale
- Complimentary SUV airport transportation



1 BEDROOM



2 BEDROOMS

**SIZE**

- 1, 2 or 3 bedrooms
- • 1,711, 2,346 or 3,396 sq. ft.
- • (159, 218 or 315 m<sup>2</sup>)
- • Ground level

**BED(S)**

- Primary bedroom with one king bed
- Optional ocean view second bedroom with one king bed and sofa bed
- Optional ocean view Superior suite third bedroom with one king bed
- Sofa bed in living rooms

**BATHROOM(S)**

- One full bathroom per bedroom, including deep soaking tub and separate glass-enclosed shower, plus outdoor lava-rock shower
- Guest powder room in Wai'olu suite with a ceiling-mounted rainfall shower, a steam sauna option and tile benches
- Guest powder room in ocean view Superior suite

**VIEW**

- Beautiful gardens, lawn and pool

**HIGHLIGHTS**

- Lower-level garden setting
- Large lanai
- Walk-out to a shared lawn, steps from Palm Grove pool

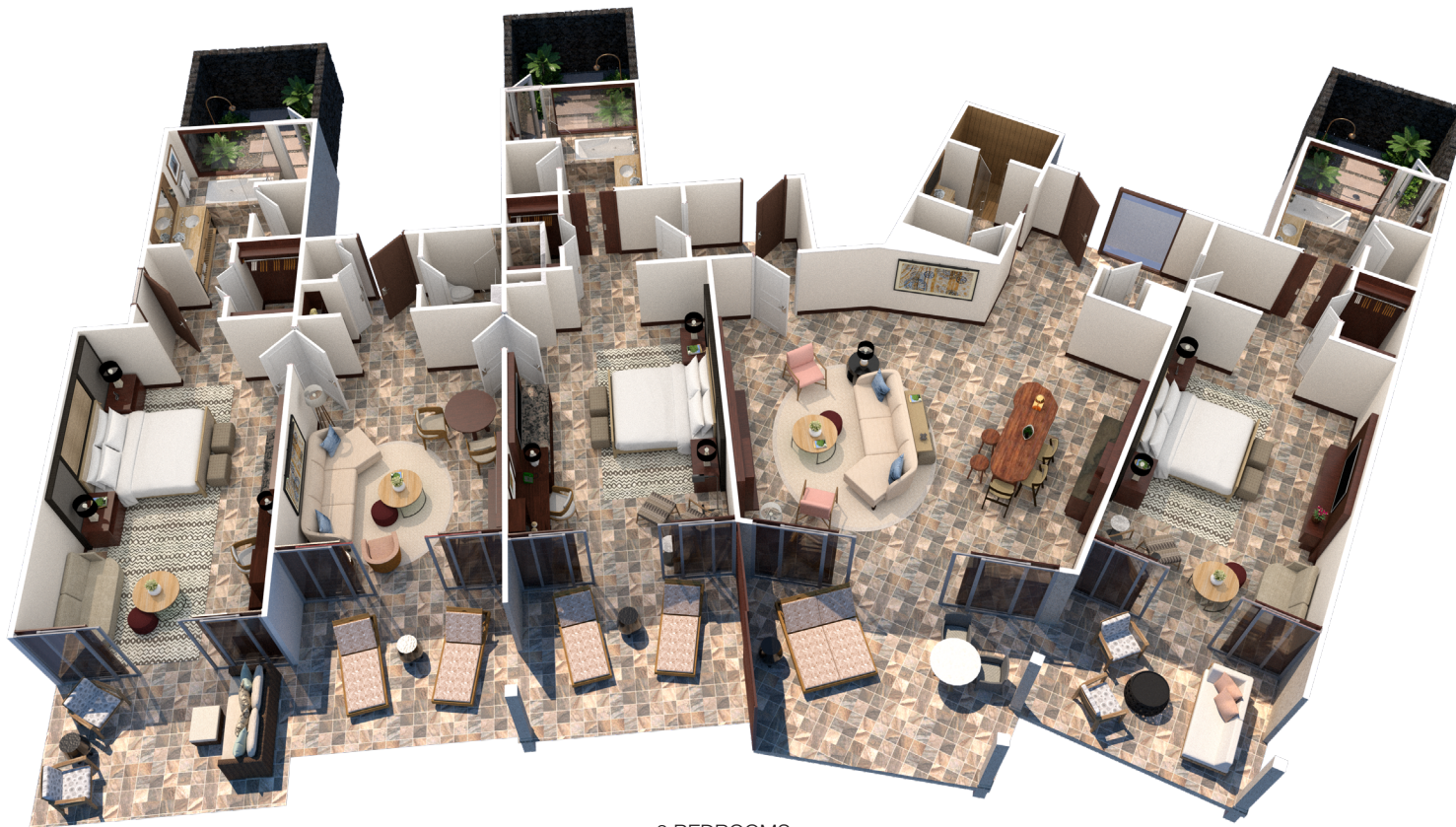
FOUR SEASONS RESORT HUALALAI  
 72-100 Ka'upulehu Drive  
 Kailua-Kona, Hawaii 96740, U.S.A.  
 Toll-free in Canada / U.S.A.: (1 888) 340-5662  
 Tel. 1 (808) 325-8000  
 Email [reservations.hualalai@fourseasons.com](mailto:reservations.hualalai@fourseasons.com)

CONNECT WITH US AT

[fourseasons.com/hualalai](http://fourseasons.com/hualalai)



WAI'OLU SUITE  
 FLOOR PLAN



3 BEDROOMS

**SIZE**

- 1, 2 or 3 bedrooms
- • 1,711, 2,346 or 3,396 sq. ft.
- • (159, 218 or 315 m<sup>2</sup>)
- • Ground level

**BED(S)**

- Primary bedroom with one king bed
- Optional ocean view second bedroom with one king bed and sofa bed
- Optional ocean view Superior suite third bedroom with one king bed
- Sofa bed in living rooms

**BATHROOM(S)**

- One full bathroom per bedroom, including deep soaking tub and separate glass-enclosed shower, plus outdoor lava-rock shower
- Guest powder room in Wai'olu suite with a ceiling-mounted rainfall shower, a steam sauna option and tile benches
- Guest powder room in ocean view Superior suite

**VIEW**

- Beautiful gardens, lawn and pool

**HIGHLIGHTS**

- Lower-level garden setting
- Large lanai
- Walk-out to a shared lawn, steps from Palm Grove pool

FOUR SEASONS RESORT HUALALAI  
 72-100 Ka'upulehu Drive  
 Kailua-Kona, Hawaii 96740, U.S.A.  
 Toll-free in Canada / U.S.A.: (1 888) 340-5662  
 Tel. 1 (808) 325-8000  
 Email [reservations.hualalai@fourseasons.com](mailto:reservations.hualalai@fourseasons.com)

CONNECT WITH US AT

[fourseasons.com/hualalai](https://www.fourseasons.com/hualalai)



WAI'OLU SUITE  
 FLOOR PLAN